



VESSEL SPECIFICATION

PRINCIPAL PARTICULARS

VESSEL TYPE	SPUD BARGE
YEAR OF BUILT	2014
PLACE OF BUILT	BAHRAIN
FLAG	QATAR
OFFICIAL NO.	369/14
CLASS	ABS
CLASS NO.	14256189
DEADWEIGHT (T)	2406
DISPLACEMENT (T)	2884

MAIN BARGE PARTICULARS

LOA	54.86 M
BREADTH	18.29 M
DEPTH MOULDED	3.96 M
DRAFT LOADED	3.22 M
LIGHT DRAFT	0.70 M

DECK PARTICULARS

DECK AREA	APPROX. 900 M2
DECK STRENGTH	15 T/M2

BARGE TONNAGE

GROSS TONNAGE (T)	979
NET TONNAGE (T)	293

BARGE MOORING SYSTEM

SPUDS	4 NOS.
SPUD DIAMETER	83 CM
SPUD LENGTH	22 M
4 POINT MOORING SYSTEM	YES
SPUD WINCHES	4 X 15T
WINCHES SPECIFICATION OF SPUDS	ELECTRO HYDRAULIC SINGLE DRUM WINCHES
ANCHOR	4 NOS. - 2,030 KG EACH
ANCHOR WINCHES	4 X 10T
ANCHOR WIRE LENGTH	200 M
POWER GENERATOR	2 X PERKINS @ 1500 RPM
POWER GENERATOR CAPACITY	2 X 80 KVA

OTHER PARTICULARS

F.W. TANK	5T
-----------	----



مارين ماستر للخدمات البحرية ذ.م.م
MARINE MASTER OFFSHORE SERVICES W.L.L.

YOUR TRUSTED OFFSHORE PARTNER

Particulars given herein are believed to be correct but not guaranteed. Owners reserve the rights to amend specifications without notification.

SCANTLING TABLE	
ITEMS	SCANTLING
MAIN DECK	180mm THK. MS. PL. NON-BONDING TIG. PL.
BOTTOM	125mm THK. MS. PL. NON-BONDING TIG. PL.
SIDE SHELL	125mm THK. MS. PL. NON-BONDING TIG. PL.
LONGIT. BHD.	180mm THK. MS. PL. NON-BONDING TIG. PL.
TRANS. BHD.	180mm THK. MS. PL. NON-BONDING TIG. PL.

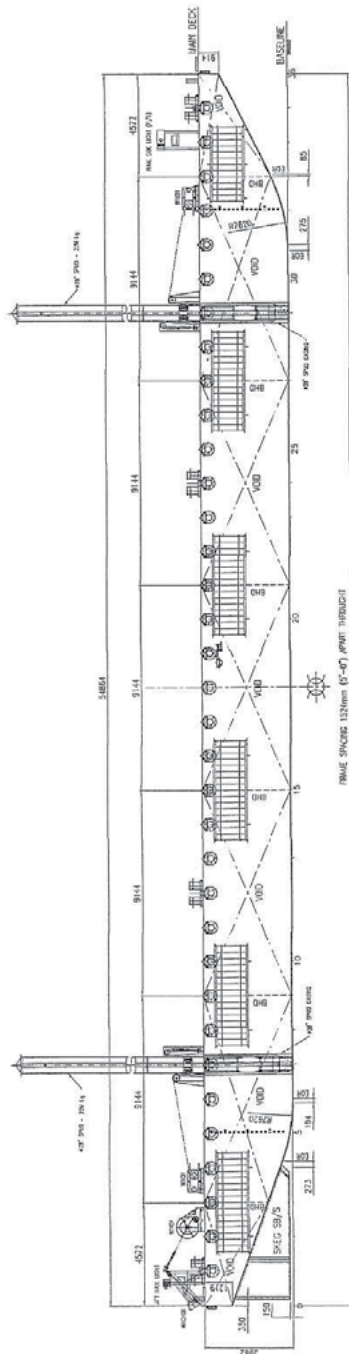
PRINCIPAL DIMENSIONS

LENGTH (M/D.)	54.865 M. (180.0 FT.)
BREADTH (M/D.)	18.288 M. (60.0 FT.)
DEPTH (M/D.)	3.962 M. (13.0 FT.)
DECK LOAD	15 T/M ²
CLASS	ABS + A1 BARGE

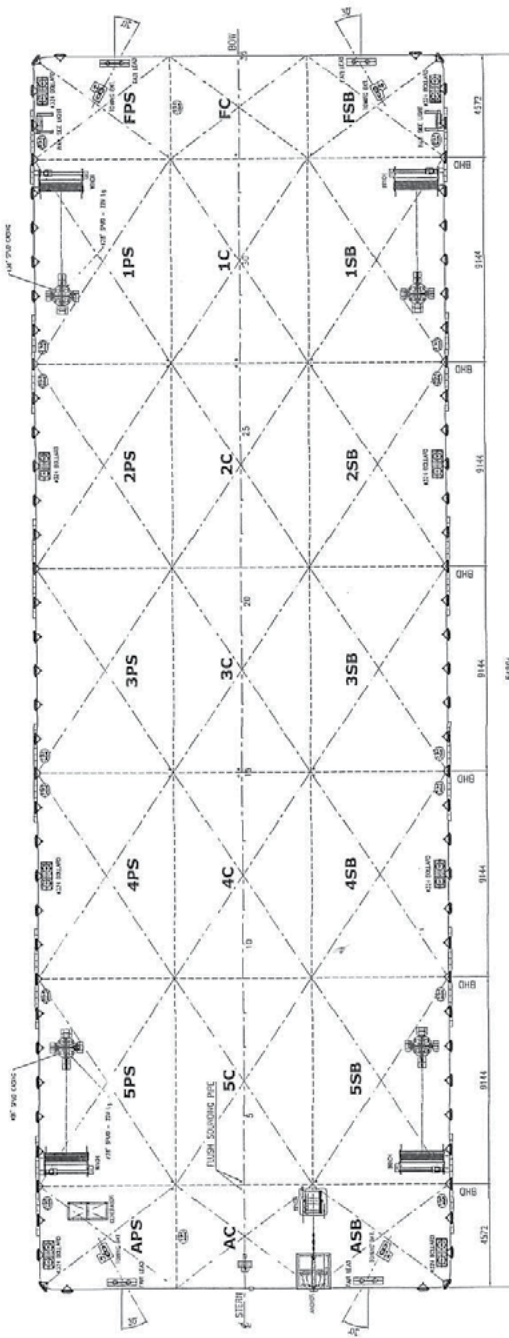
NOTES:

1. PERMISSIBLE DECK LOADING 15 TONNES/SQ.M. UDL.
2. ALL COMPARTMENTS ARE VOID.
3. ALL MANHOLES TO BE RAISED TYPE.
4. MANHOLES TO CENTRE YARDS TO BE ON LONGITUDINAL BHD.
5. SOUNDING PIPES TO BE FITTED TO ALL SUCH YARDS.

NO.	1812/2013	ISSUED FOR CLASS APPROVAL	REVISION	DATE	BY
<p>NASS MARINE SERVICES P.O. Box 686, Malacca, Bah'ru.</p>					
<p>TEL: +675-17-467722 E-Mail: nassmarine@nassmarine.com.au</p>					
<p>VERNO</p>					
<p>180'x60'x13' DECK CARGO BARGE</p>					
<p>DWG NAME : GENERAL ARRANGEMENT</p>					
<p>SCALE : 1:100 ABS ID : Y205189 DWG NO : 1/043/008</p>					
<p>PROJECT ID : 043 ABS HULL NO : 033 SHEET NO : 01 OF 01</p>					



OUTBOARD PROFILE



MAIN DECK ARRANGEMENT PLAN

THIS DRAWING OR INFORMATION HEREIN IS THE PROPERTY OF NASS MARINE SERVICES. IT IS TO BE USED ONLY FOR THE PROJECT AND NOT TO BE REPRODUCED OR TRANSMITTED IN ANY FORM OR BY ANY MEANS, ELECTRONIC OR MECHANICAL, WITHOUT PERMISSION IN WRITING FROM NASS MARINE SERVICES.